



About the Integrated Annual Report

Message from the Management

SIMPAR Group

Highlights 2023

Intellectual and Reputational Capital

Human Capital

Social and Relationship Capital

Natural Capital

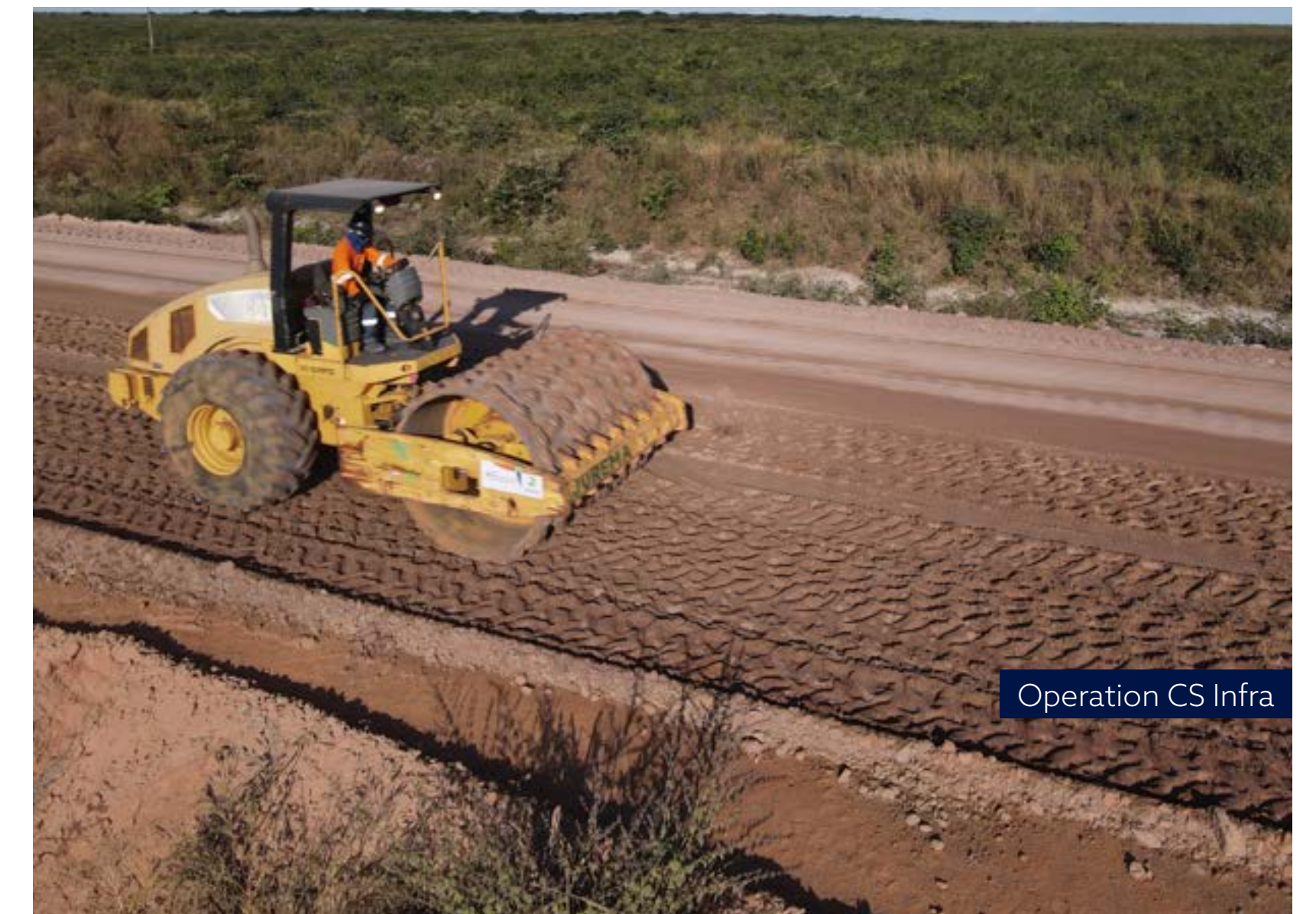
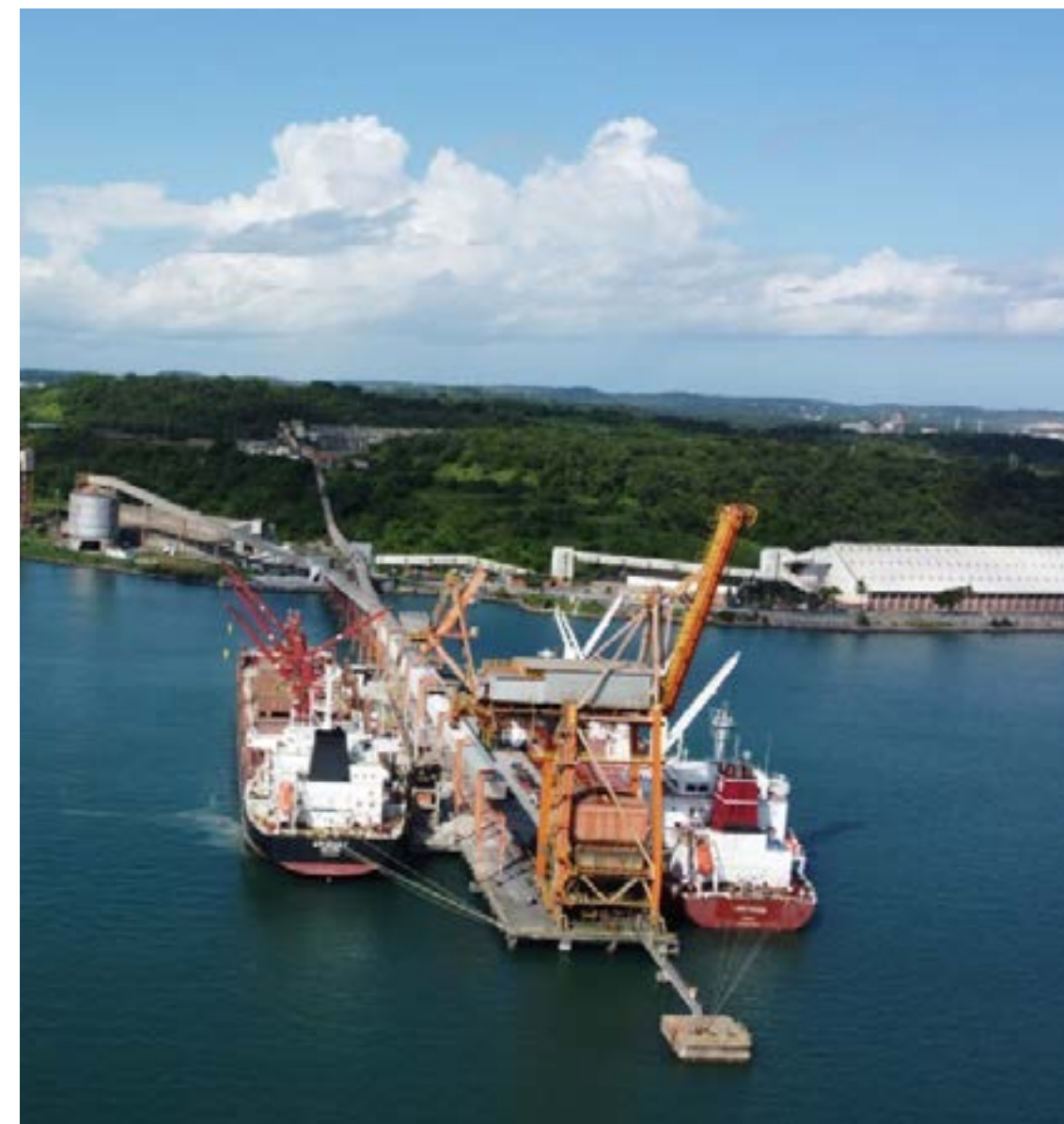
Financial Capital

Annexes

GRI Content Index

CS Infra

Created in 2021, **CS Infra** is the **SIMPAR** Group's long-term concessions management platform, operating in the following **Environmental** and **Infrastructure** segments.



Operation CS Infra

» **Ciclus Rio**

Responsible for solid waste management in Rio de Janeiro – around 10 thousand tons of solid waste are received daily through a concession from the Municipal Urban Cleaning Company (Comlurb), and from municipalities such as Seropédica, Itaguaí, Mangaratiba, São João de Meriti, Piraí and Miguel Pereira – production of biogas and demineralized water. In 2023, an addendum to the concession contract was signed with Comlurb, extending it until April 2036 (the previous term being April 2026) and redefining the tariff adjustment mechanism.

The company manages one of the largest waste recovery operations in Latin America, with cutting-edge and sustainable technology solutions, and is responsible for correctly disposing and treating solid and commercial waste in Rio de Janeiro. To this end, there are five Waste Transfer Stations (ERTs) and a Waste Treatment Center (CRT) at strategic points in the State, such as in the municipalities of Seropédica, Itaguaí, Mangaratiba, São João de Meriti, Piraí and Miguel Pereira. The

CTR located in Seropédica (RJ) was designed with specific blankets for soil preservation and is equipped with waste management and transformation technology. Its installation allowed the closure and environmental recovery of the Itaguaí and Seropédica landfills, in addition to the controlled Gramacho and Gericinó landfills.

There are 3.7 million square meters of total waterproofing in the landfill, through four layers of protection that, combined with electronic anomaly detection sensors, aim to guarantee the non-contamination of soil and groundwater. In addition, the environmental project was planned and executed with state-of-the-art technology, preserving air quality.

The CTR has leachate drains, sending the pollutant for treatment in its own station, going through different stages, including the reverse osmosis technique, one of the most modern in the world, resulting in clean, demineralized water, which can be sold for different uses – since 2020 it has been used to irrigate CTR's own roads.

Also using vertical drains, biogas is captured at CTR Rio. With methane percentage exceeding 50%, it is extracted using suction and, when it reaches the collection station, it is used for different processes, such as energy production, serving as fuel in motor generators.



Operation Ciclus Rio

SUSTAINABILITY HIGHLIGHTS

Ciclus Rio GRI 306-2, SASB TR-RO-110A.2/ TRAF-110A.2

With the infrastructure present at the landfill at the end of 2023, it was already possible to avoid the release of 20 thousand m³/h of methane gas into the atmosphere per day, equivalent to the emission of 300 thousand light vehicles. This corresponds to around 5% of the fleet of vehicles in this category in the city of Rio de Janeiro. During the year, Ciclus also completed the installations and connections for the free energy market, with an installed capacity of 2.8 MW, selling 1.8 MW of surplus energy. There is potential to expand this energy, to 8.4 MWh, after implementing new motor generators, scheduled to begin operation in 2025.

Furthermore, through the capture of gases, the company generates carbon credits and prevents the atmospheric emission of methane. At the end of 2023, generation already corresponded to 8.5 million credits, of which 6 million are in stock to be sold. By 2025, it is estimated that an additional 2 million CO₂ credits will be generated.

Ciclus Ambiental is registered under the Clean Development Mechanism (CDM) of the United Nations Framework Convention on Climate Change.

» Ciclus Amazônia

Responsible, in a Public-Private Partnership model whose concession was obtained in January 2024, for the provision of urban cleaning and solid waste management services in the city of Belém (PA). The concession will last 30 years and includes a monthly payment of R\$32.7 million. In the first ten years, investments of around R\$400 million are expected; In total, resources of approximately R\$700 million will be allocated.

The scope of the contract includes collection, sweeping, recovery of the Aurá landfill, implementation of ecopoints, ETR and CTR (Waste Transport Control). The work also includes the treatment, destination and final disposal in an environmentally appropriate manner of solid urban waste and waste from commercial establishments and service providers, with a volume and composition comparable to household waste. And also waste from health services and construction.

About the Integrated Annual Report

Message from the Management

SIMPAR Group

Highlights 2023

Intellectual and Reputational Capital

Human Capital

Social and Relationship Capital

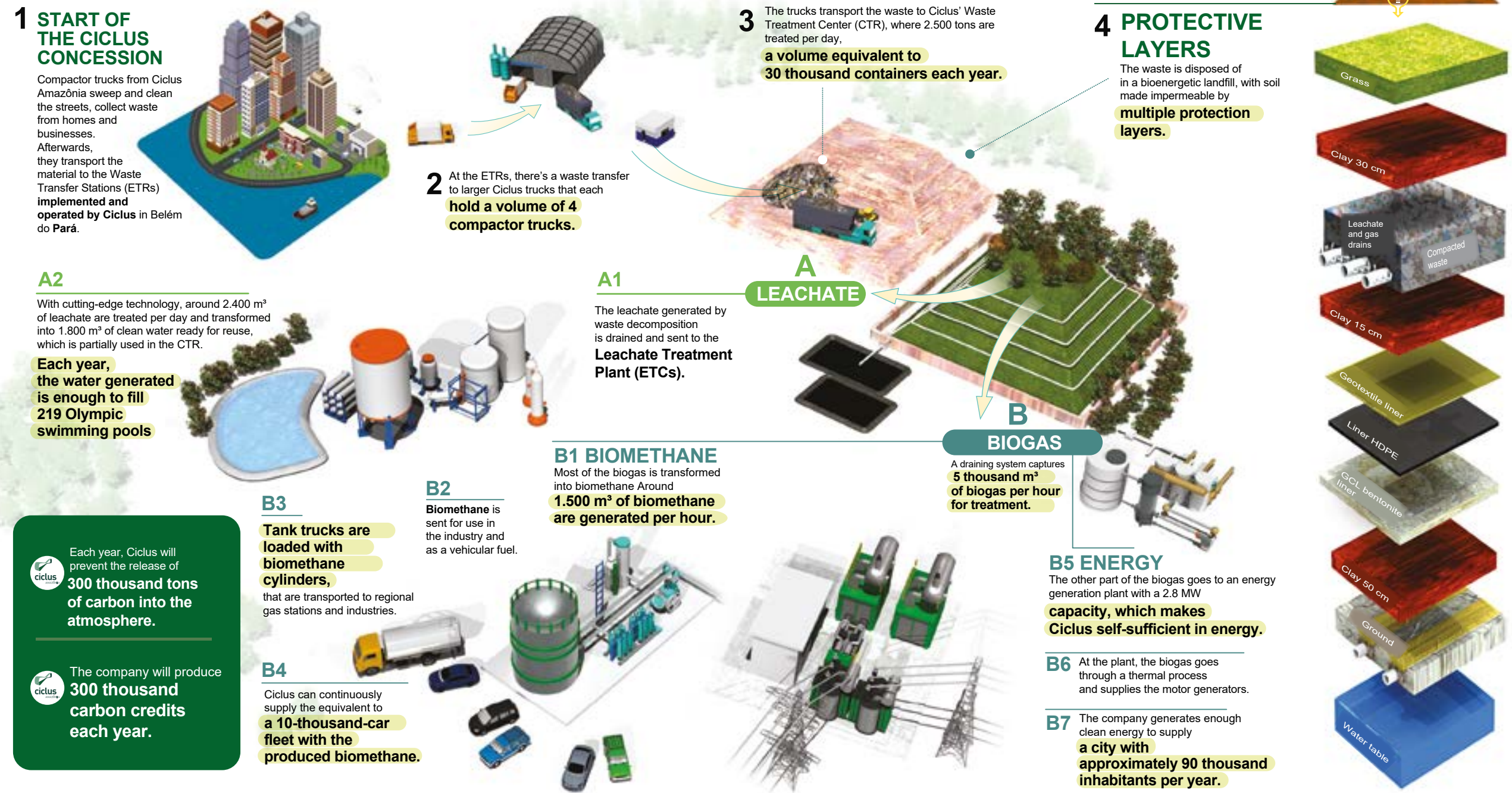
Natural Capital

Financial Capital

Annexes

GRI Content Index

CICLUS AMAZÔNIA OPERATION



SUSTAINABILITY HIGHLIGHTS

Ciclus Amazônia

With the activities and works, it is expected to generate 3 thousand direct jobs, in addition to indirect jobs. The increase in the recovery of recyclable waste also foresees the insertion of

cooperatives and collectors in the waste treatment industry, with CTR having the capacity to receive more than 2,500 tons/day of urban solid waste, with the possibility of expansion to up to 4,000 tons /day, if it eventually serves other cities in the metropolitan region of Belém.

» CS Portos

With the provision and modernization of disembarkation, embarkation and storage services at the ATU-12 and ATU-18 port terminals, at the Port of Aratu, in Candeias (BA); The concession contracts last for 25 and 15 years, respectively, and both can be extended for up to 70 years. More than R\$105 million has already been invested in improvement and modernization works at the terminals and, by 2026, the following will be carried out, among others: modernization and demobilization of old equipment; construction of an exclusive warehouse for the stock and movement of fertilizers and a storage yard for sulfur; adoption of a belt system for export; acquisition of ship loaders and unloaders, conveyors; construction of scales and tippers and silos for grain movement; and creation of a berth at ATU-18.

About the Integrated Annual Report

Message from the Management

SIMPAR Group

Highlights 2023

Intellectual and Reputational Capital

Human Capital

Social and Relationship Capital

Natural Capital

Financial Capital

Annexes

GRI Content Index



SUSTAINABILITY HIGHLIGHTS

CS Portos GRI 203-1

Through **CS Portos**, **CS Infra** contributed to the development of agribusiness in the region, as fertilizers and grains are handled in the Port of Aratu, as well as copper concentrate, iron ore and magnesite. In the first three years of operation, investment is expected to be more than R\$700 million, generating approximately more than 600 direct jobs during the works and another 200 after the works are completed. Solar capture panels will also be installed to generate up to 20% of the energy to be consumed at the terminals.

Operation CS Portos in Candeias, Bahia

» CS Rodovias/Grãos do Piauí

Since December 2021, it has been responsible, under a Public-Private Partnership model and 30-year contract, for the operation and maintenance of 276.8 kilometers of the Transcerrados Highway, in Piauí (PI-397 and PI-262). The stretch covers 25 municipalities in an area of almost 25% of the State, with a population of almost 200 thousand inhabitants, being recognized as a route for the production of grains, corn and soybeans. Around R\$ 150 million has already been invested in improvements and modernization, including the delivery of initial works to restore and pave the highway; the inauguration of the Operational Control Center (CCO) and the Operational Services Base to serve users; and the installation of radio communication towers in strategic locations and more than 400 signposts, among others. The concession contract also provides for the installation of four toll plazas, three of which will be opened in 2023.



PPP Operation CS Rodovias

SUSTAINABILITY HIGHLIGHTS

CS Rodovias/Grãos do Piauí GRI 203-1

Since the start of work on the highway, more than 400 direct and indirect jobs have been created. The expectation is that the interventions will contribute to increasing economic gains and budget revenues, strengthening municipalities and the State of Piauí through the installation of industries and commerce, gas stations and restaurants along the highway. R\$ 150 million has already been invested in works that provide greater safety and quality of service for the population - an example is the inauguration of the User Assistance Service (SAU), which has accessible

bathrooms for People with Disabilities (PwDs), baby changing facilities, water fountain, self-service totems, Wi-Fi and rest area, among other services. Furthermore, in partnership with the Julio Simões Institute, the "Right Direction" action was carried out, with preventive health care, free of charge and exclusively for truck drivers traveling along Transcerrados (PI-397). Drivers were able to measure blood glucose, blood pressure and Body Mass Index (BMI), with guidance based on the test results.

Following requirements to obtain the environmental license issued by the Secretariat of the Environment and Water Resources of the State of Piauí, before the start of paving works, the fauna of the region was chased away and rescued, also checking for nests, burrows and other places that shelter wild animals. Said monitoring continues throughout the road modernization process.

In total, approximately R\$800 million will be invested over 30 years of concession.

» **CS Mobi Cuiabá**

Result of a Public-Private Partnership, is responsible for the modernization of the Miguel Sutil Municipal Market, a historic landmark in the region, and the Historic Center of Cuiabá (MT), in addition to the administration and implementation of local rotating parking on public roads. The amount will be allocated to renovation work on the Municipal Market, with the construction of a shopping mall and parking, a modernization project and the installation of new urban furniture, in addition to the requalification of the Historic Center and surrounding roads. The notice also provides for the construction and installation of a bus shelter and smart mobility panel; electronic information totem; street clock and thermometer; and public bench with Wi-Fi repeater.

SUSTAINABILITY HIGHLIGHTS
CS Mobi Cuiabá

The project will result in a new community, shopping mall and tourism center, contributing to the recovery of citizenship, mobility and economy - including the generation of direct and indirect jobs and business opportunities for traders - in addition to positively impacting the quality of life and well-being of the population, with, for example, the installation of a gym equipment station and racks for electric bicycles. Still around the market, in addition to the restoration of sidewalks on structural roads, trees will be planted and the drainage network will be restored.



Municipal market Project in Cuiabá

About the Integrated Annual Report

Message from the Management

SIMPAR Group

Highlights 2023

Intellectual and Reputational Capital

Human Capital

Social and Relationship Capital

Natural Capital

Financial Capital

Annexes

GRI Content Index

» **BRT Sorocaba**

Responsible for the BRT (Bus Rapid Transit) concession in the city of Sorocaba (SP). Activities began in 2021 and the concession lasts for 20 years. At the end of 2023, BRT operated 76 buses, which transported around 833 thousand passengers/month.



BRT Sorocaba bus corridor

SUSTAINABILITY HIGHLIGHTS
BRT Sorocaba

The concessionaire has already implemented two of the three exclusive BRT corridors foreseen in the contract, including photovoltaic panels in the terminals and stations. During the year, the operation's passenger cars changed the use of gasoline to ethanol, eliminating more than 7,000 liters of gasoline. Other actions were changing paper towels for an electric dryer in the

garage and at the São Bento and Vitória Régia Terminals (avoiding, in addition to the generation of waste, emissions resulting from the transport of the product).

Another notable action is the reuse/reuse of spare material from other works in the revitalization of the West corridor.

About the Integrated Annual Report

Message from the Management

SIMPAR Group

Highlights 2023

Intellectual and Reputational Capital

Human Capital

Social and Relationship Capital

Natural Capital

Financial Capital

Annexes

GRI Content Index